

ELECTRIC



MANUFACTURER: General Motors
PRODUCT OFFERING: EV1

AVAILABILITY: 1997 model year in Los Angeles, San Diego, Phoenix, and Tucson markets

VEHICLE TYPE: Two-passenger car

EMISSION CLASSIFICATION: Federal Clean Fuel Fleet; California ZEV/ILEV

POWERTRAIN: 102-kW (137-hp), three-phase, liquid-cooled AC induction motor

DRIVETRAIN: FWD

TRANSMISSION: Fixed ratio transaxle

FUEL CAPACITY: 16.2 kW, Delphi Energy Systems 312-V recyclable lead-acid battery pack

MULTI-FUEL: No — dedicated

SPECIAL MAINTENANCE: None

WARRANTY: Full OEM through Saturn dealers

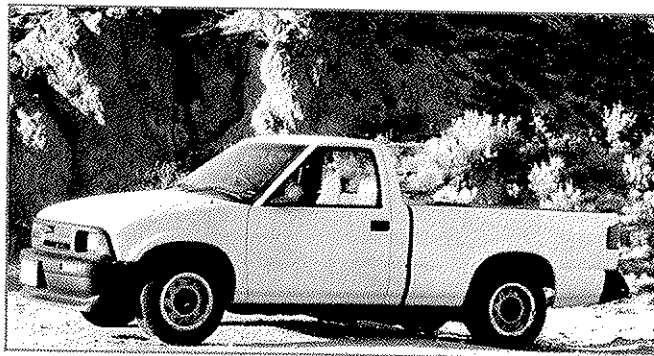
ADDITIONAL COSTS: Contact Saturn dealers for information

NO. OF UNITS PLANNED: Depends on orders received

COMMENTS: Standard antilock brakes, driver and passenger airbags, daytime running lamps, air conditioning; offboard Delco Electronics Magne-Charge inductive charger rated 6.6 kW at 156-260 VAC; estimated range: 90 miles highway, 70 miles city

ORDERING INFORMATION: Call 1-800-25ELECTRIC

ELECTRIC



MANUFACTURER: General Motors
PRODUCT OFFERING: Chevrolet S-Series

AVAILABILITY: 1997 calendar year

VEHICLE TYPE: Light-duty truck

EMISSION CLASSIFICATION: Federal Clean Fuel Fleet; California ZEV

POWERTRAIN: 85-kW (114-hp) three-phase, liquid-cooled AC motor

DRIVETRAIN: FWD

TRANSMISSION: Fixed ratio transaxle

FUEL CAPACITY: 16.2 kW, Delphi Energy Systems 312-V recyclable lead acid battery pack

MULTI-FUEL: No — dedicated

SPECIAL MAINTENANCE: None

WARRANTY: Full OEM through Chevrolet dealers

ADDITIONAL COSTS: Call 1-800-222-1020 for information

NO. OF UNITS PLANNED: Depends on orders received

COMMENTS: Standard antilock brakes, daytime running lamps, air conditioning; offboard Delco Electronics Magne-Charge inductive charger rated 6.6 kW at 156-260 VAC; estimated range: 45 miles highway, 40 miles city, 60 miles at 45-mph constant speed

ORDERING INFORMATION: Call 1-800-222-1020